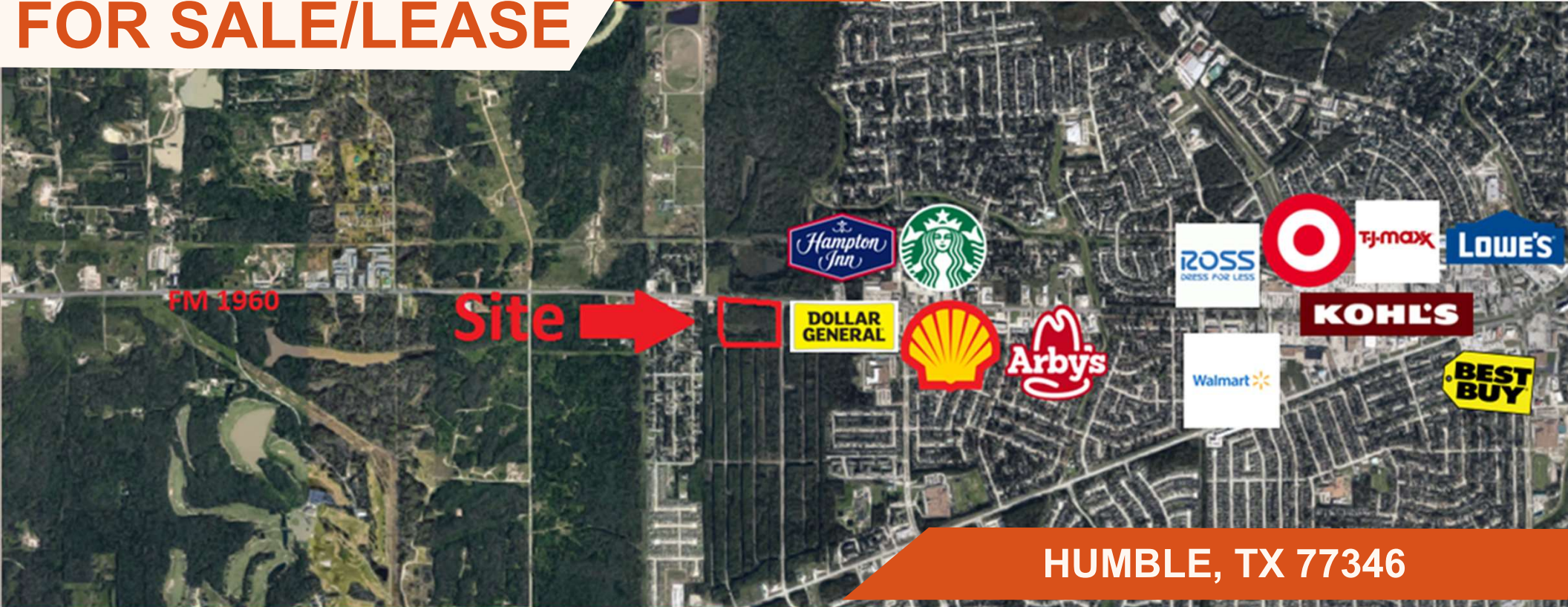




ORANGE COMMERCIAL
Strategic Real Estate Services

**3.89 ACRES
FOR SALE/LEASE**



HUMBLE, TX 77346

ABOUT THE PROPERTY:

This 3.89 acre tract is located on the Southwest corner of FM 1960 and Continental Parkway, just west of the Target, Lowes, and HEB power center. This location has great visibility and accessibility. Possible use for the tract could be for storage, RV park, Automotive shop, Plant Nursery or Day Care Facility.

CONTACT INFORMATION:

Bill Wong
713-961-9097 ext. 101
billw@orangecommercial.com
www.orangecommercial.com

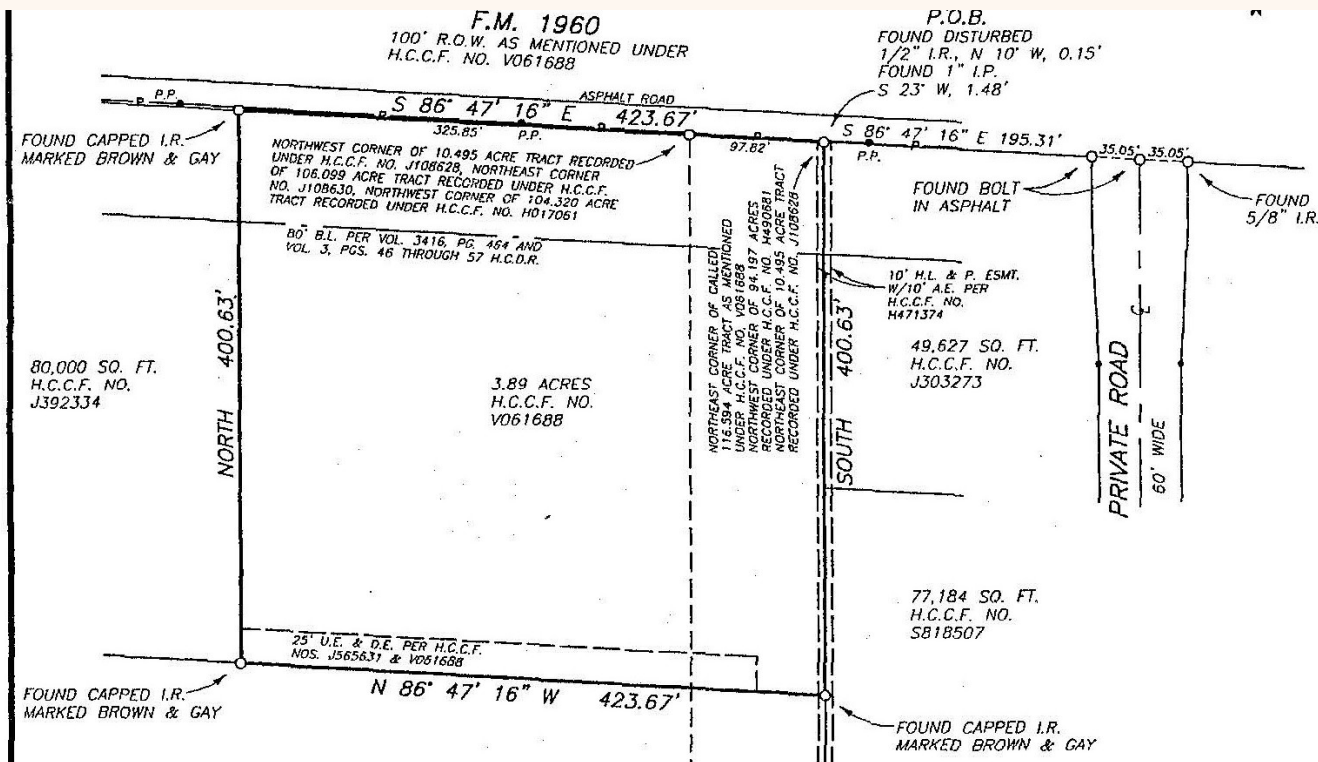


Humble, TX
77346

Availability:
3.89 acres of land

Economics:

- For Sale: \$1,694,484 or \$10.00 PSF
- Ground Lease: \$36,000 per acre per year



ORANGE COMMERCIAL
Strategic Real Estate Services

This property is subject to prior sale, leasing, financing, change in price, rental or other conditions, corrections, errors, omissions, or removal from market without notice. All information contained in this packet, while based on and supplied by sources deemed reliable, is not in any way warranted or guaranteed, either expressed or implied by Orange Commercial LLC. This packet is solely for information purposes only and under no circumstances whatsoever should be deemed as a contract, note, memorandum or any other form of a binding commitment.

