

# 2.68 ACRES FOR SALE



**ORANGE COMMERCIAL**  
*Strategic Real Estate Services*



**1500 BLOCK OF FM 1960,  
HUFFMAN, TX 77336**

## ABOUT THE PROPERTY:

This tract of land is 2.68 acres (116,741 SF.) according to HCAD and is located on the south side of FM 1960, east of Lake Houston heading to Huffman. The owner will sell part or the whole tract of land. This is a great site for a retail building or a single tenant fast food user with excellent visibility and easy access on FM 1960. The tract is located on the going home side of FM 1960.

## CONTACT INFORMATION:

Bill Wong

713-961-9097 ext. 101

[billw@orangecommercial.com](mailto:billw@orangecommercial.com)

[www.orangecommercial.com](http://www.orangecommercial.com)



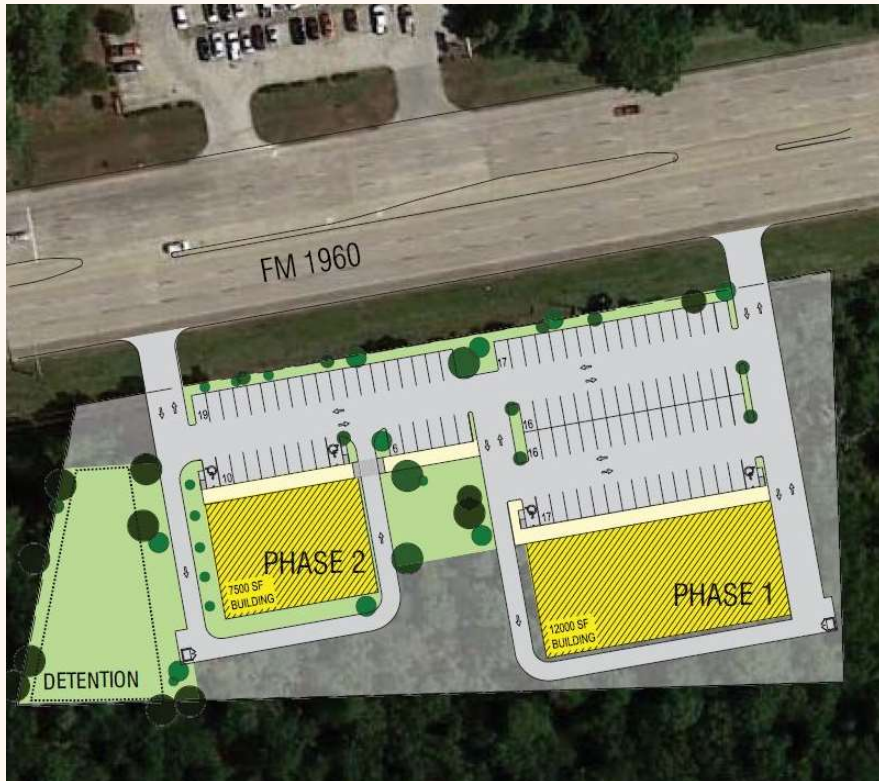


11500 Block of FM  
1960 Huffman, TX  
77336

Availability:  
2.68 acres of land

Economics:  
\$20.00 PSF

Asking Price:  
\$2,334,820



**ORANGE COMMERCIAL**  
*Strategic Real Estate Services*

This property is subject to prior sale, leasing, financing, change in price, rental or other conditions, corrections, errors, omissions, or removal from market without notice. All information contained in this packet, while based on and supplied by sources deemed reliable, is not in any way warranted or guaranteed, either expressed or implied by Orange Commercial LLC. This packet is solely for information purposes only and under no circumstances whatsoever should be deemed as a contract, note, memorandum or any other form of a binding commitment.



# AREA DETAILS

11500 Block of FM  
1960 Huffman, TX  
77336

## Area Retailers:

Fiesta, HCC.  
Marshalls, Burlington,  
99 Cent's Only

## Demographics:

	5 Miles
Population:	61,586
Households:	21,771
Median Income:	\$93,174

